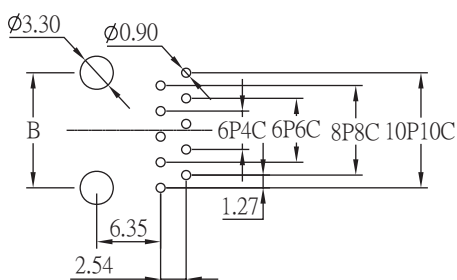
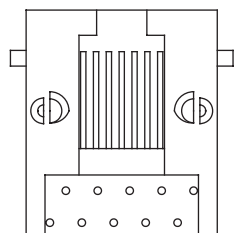
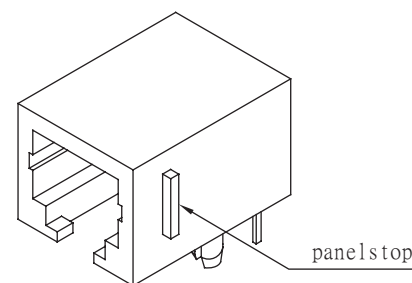
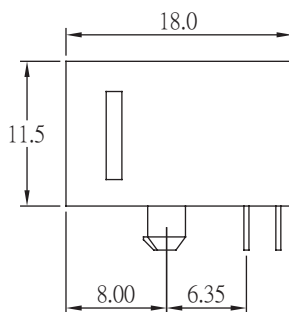
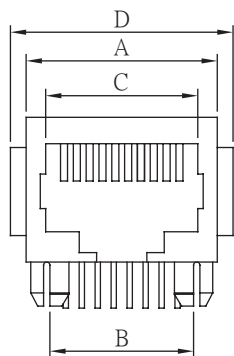
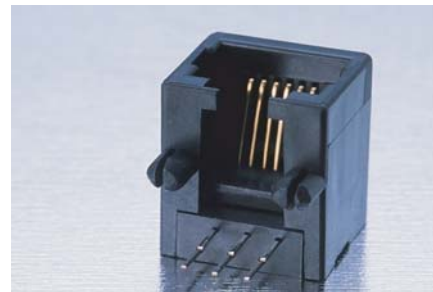


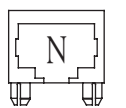
MODULAR JACK SIDE ENTRY H=11.5 W=18.0

MATERIAL & FINISH

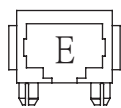
HOUSING: Glass Fiber, PBT. UL94V-0
 CONTACT: 0.35 mm thickness phosphor bronze,
 Gold plated over Nickel on contact area,
 Tin plated over Nickel on solder area.



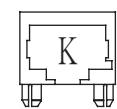
Recommended PCB Layout
 (PCB TOLERANCE ±0.05)



Without Ear



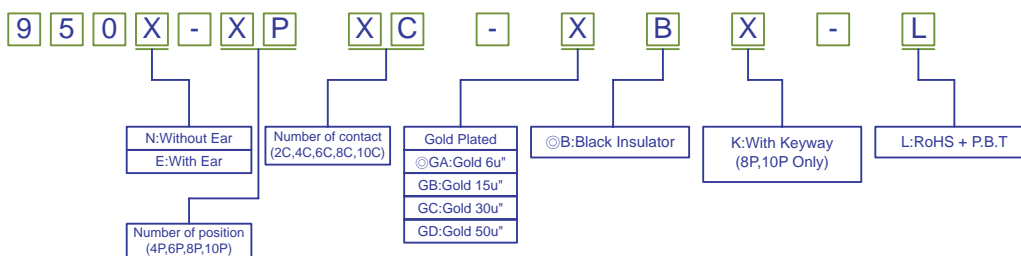
With Ear



With keyway
 (8P,10P only)

POSITION	CONTACT	A	B	C	D
4P	4C	11.20	7.62	7.80	13.70
6P	2C/4C/6C	13.20	10.16	10.00	15.70
8P	8C	15.20	11.43	12.00	17.70
10P	10C	15.20	11.43	12.00	17.70

ORDER INFORMATION



©:Standard Recommend